



Company : Santos

Well : Henry 2DW1 ST1

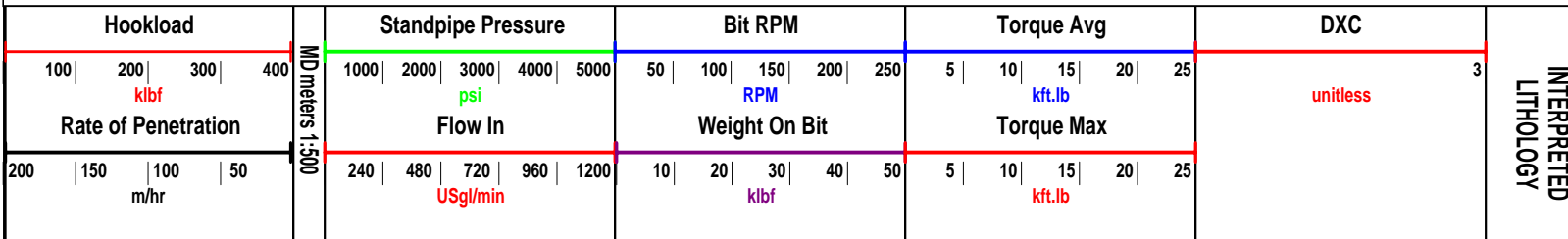
Interval : 795.00 - 1774.16 meters

Created : 07/Oct/2008 6:19:04 AM

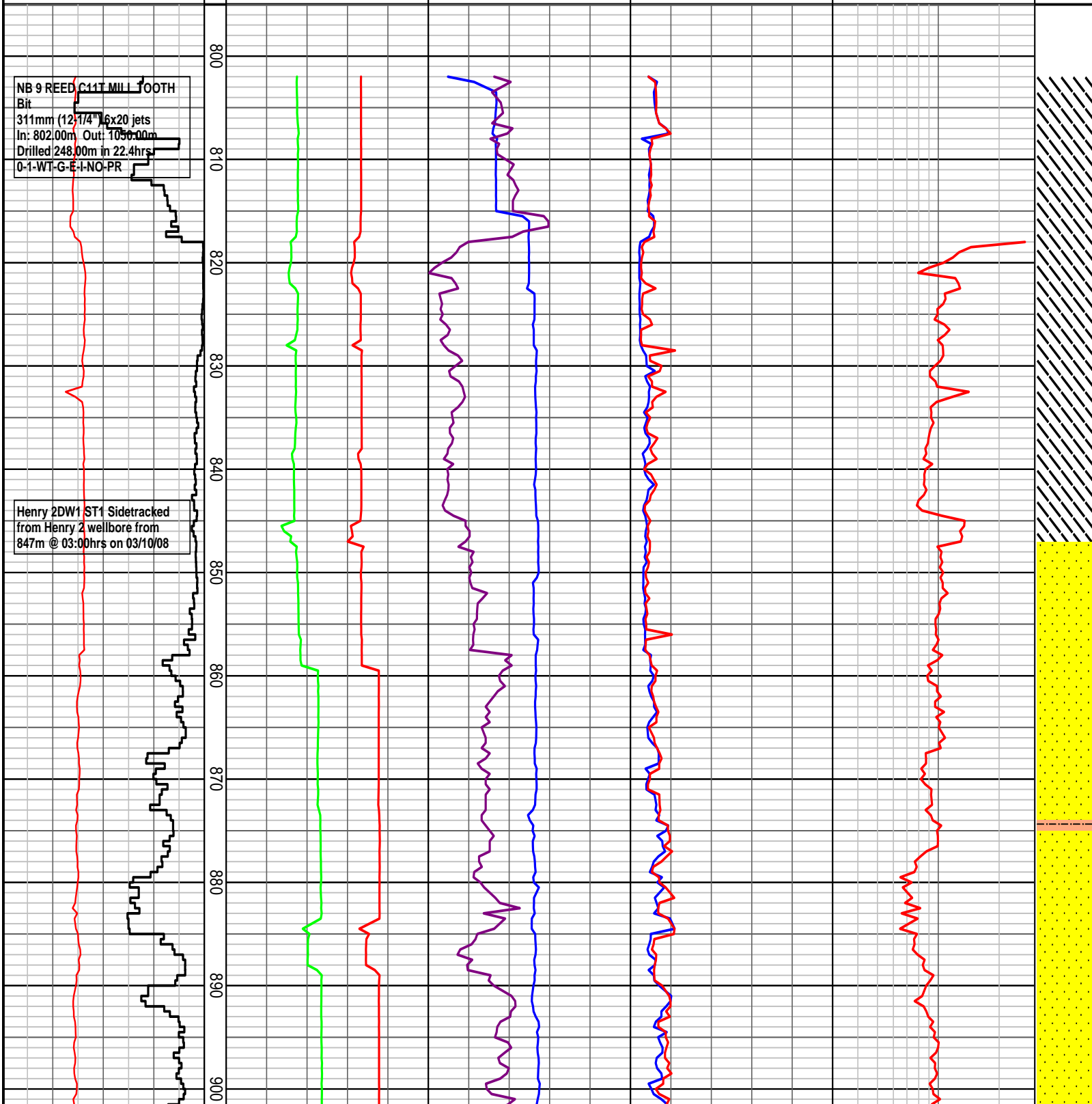


INTEQ

HENRY 2DW1 ST1 DRILLING DATA PLOT

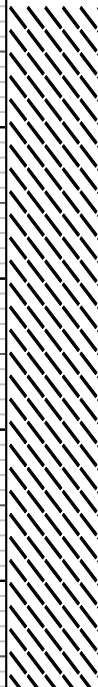


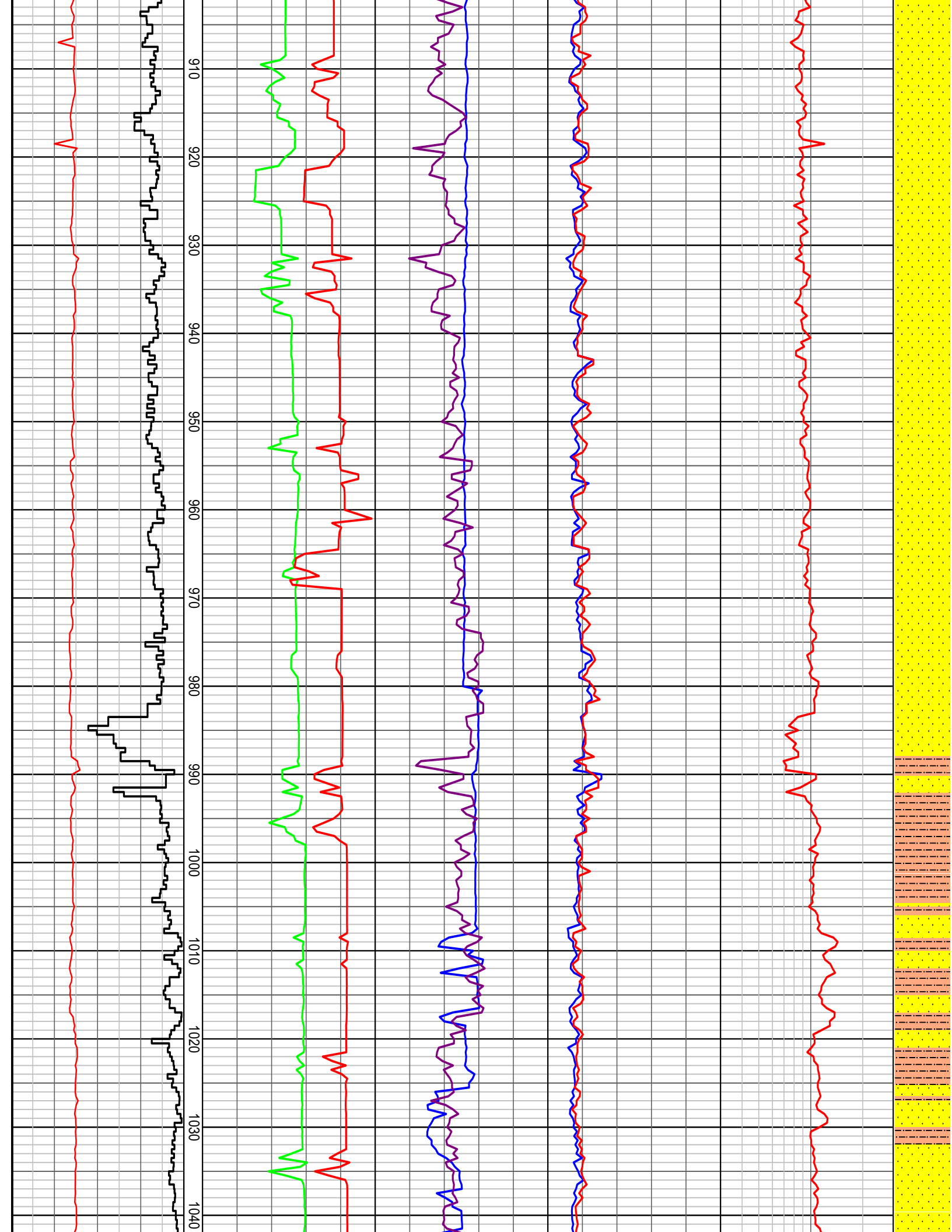
INTERPRETED LITHOLOGY



NB 9 REED C11T MILL TOOTH Bit
 311mm (12 1/4") 6x20 jets
 In: 802.00m, Out: 1056.00m
 Drilled 248.00m in 22.4hrs
 0-1-WT-G-E-I-NO-PR

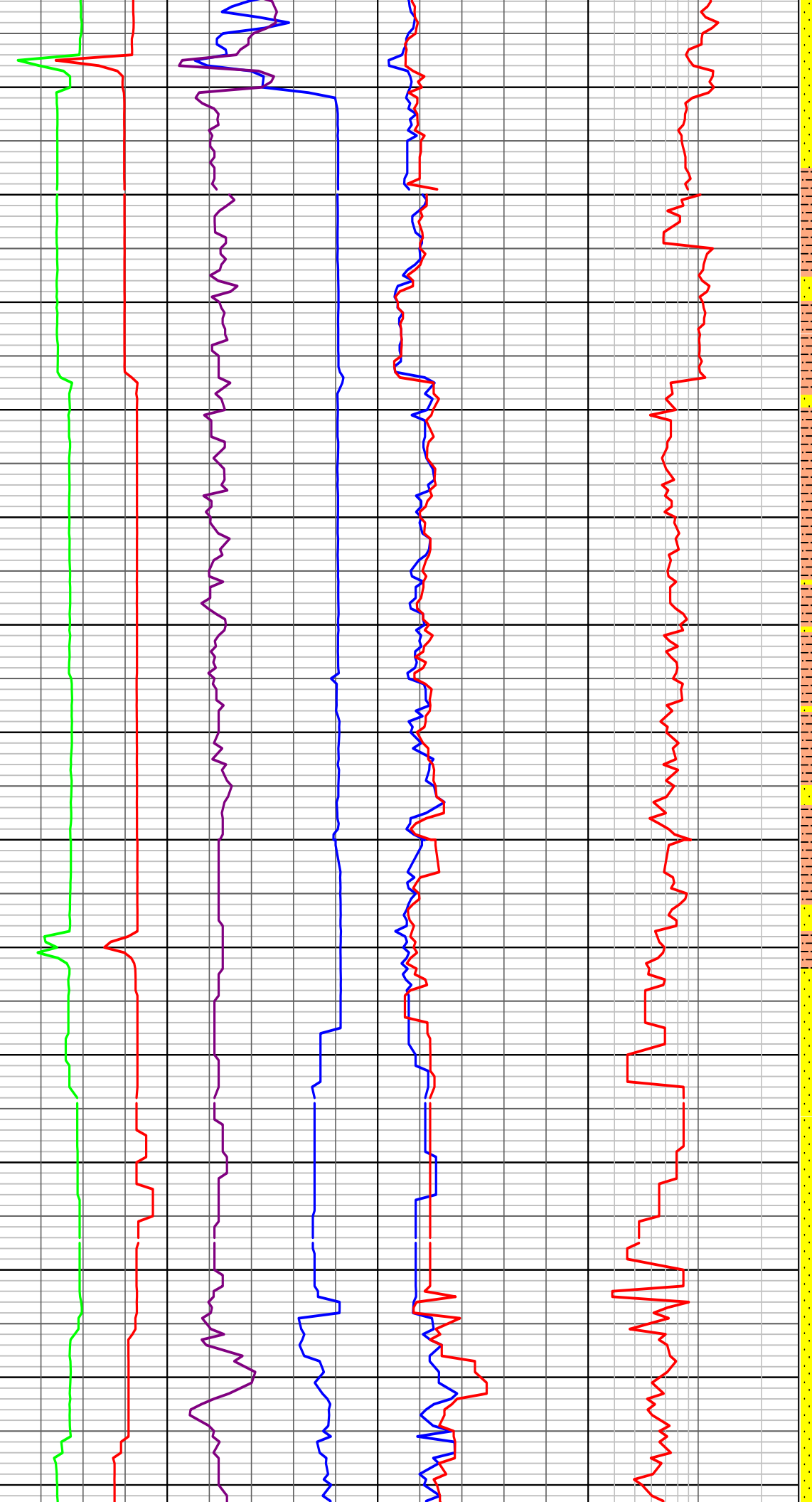
Henry 2DW1 ST1 Sidetracked from Henry 2 wellbore from 847m @ 03:00hrs on 03/10/08

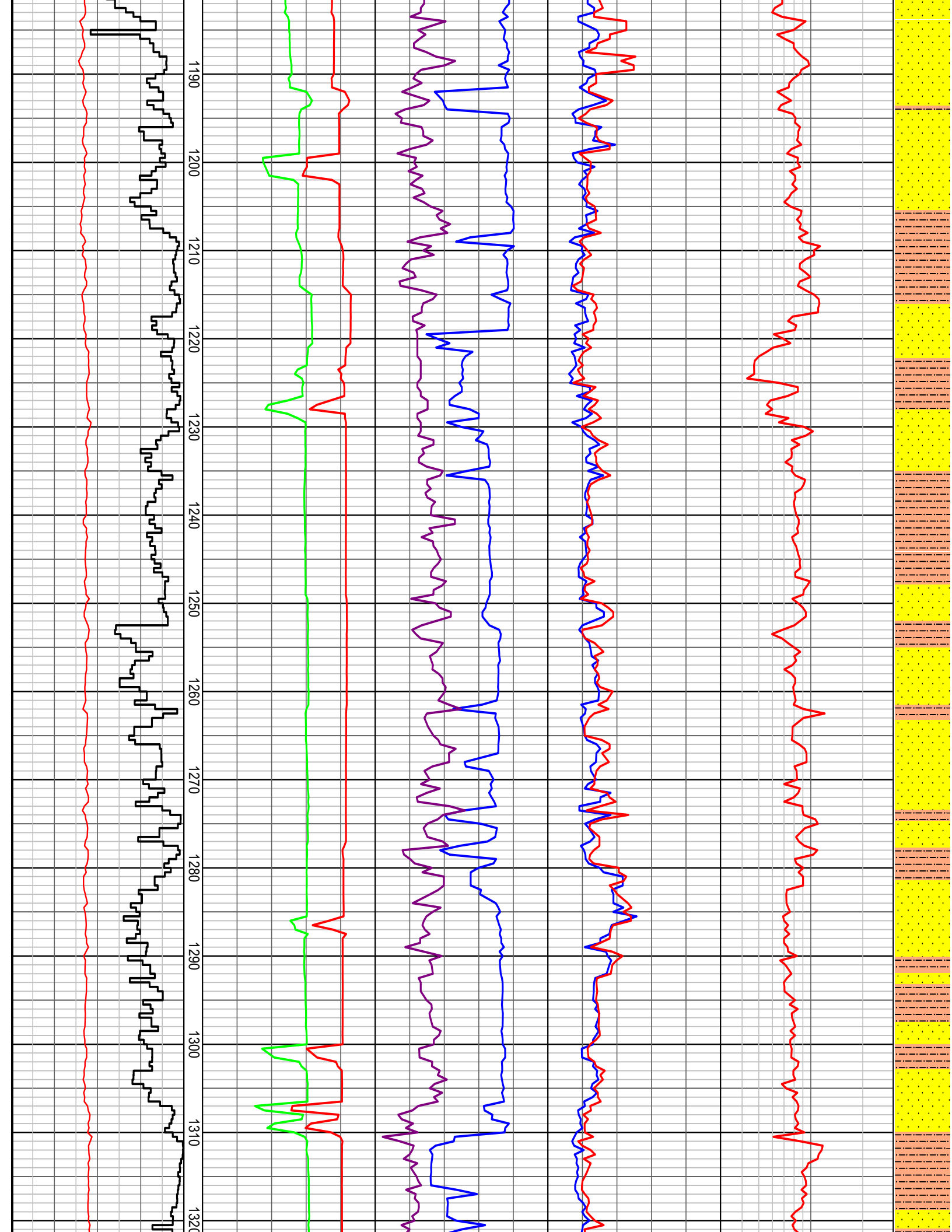


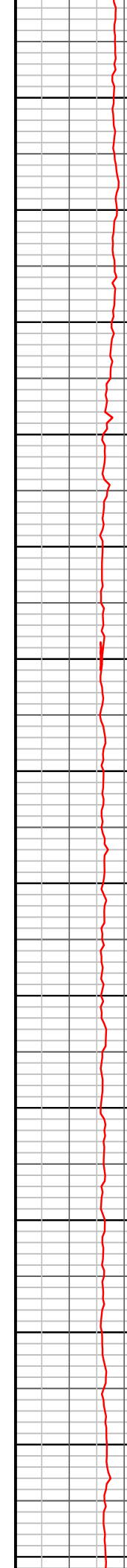
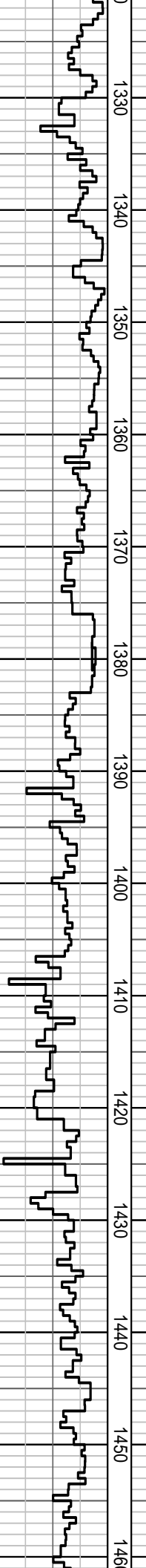
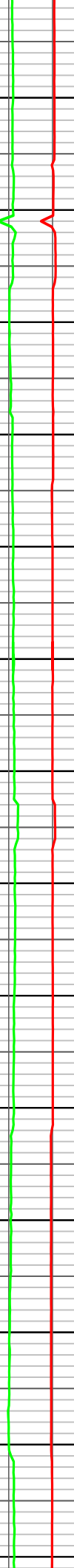
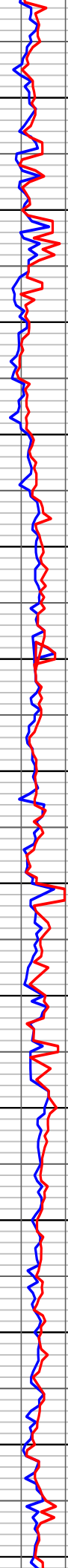
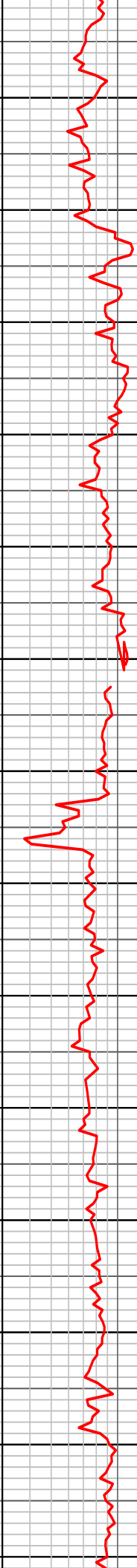
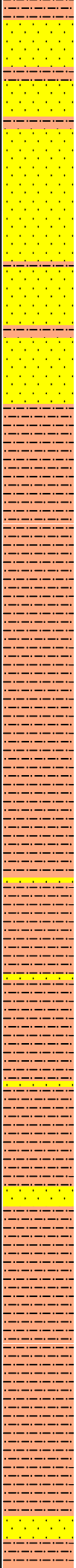


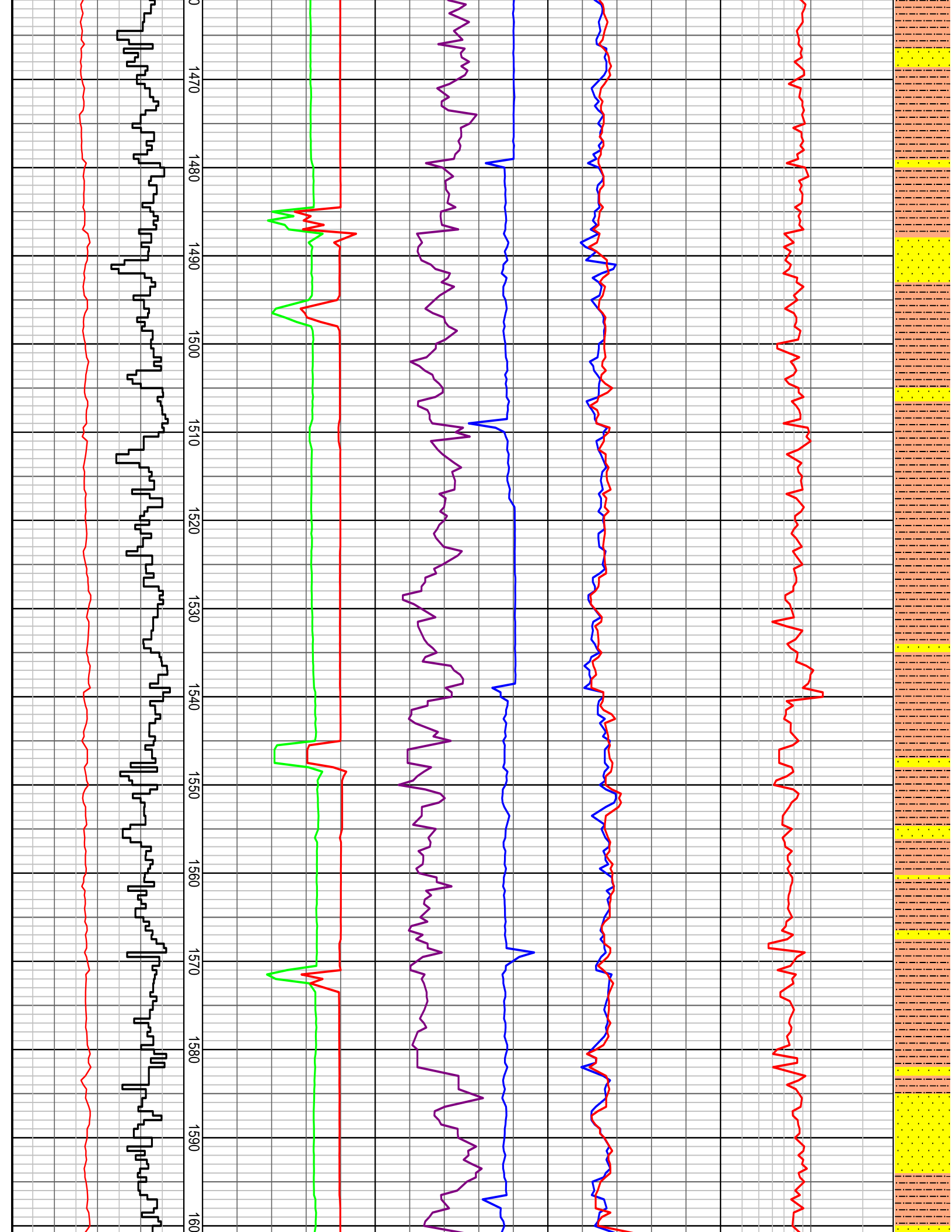
NB 10 REED/RSX616M-A16 E5C
Bit
311mm (12-1/4") 3x15 3x16 jets
In: 1050.00m Out: xxxx.xxm
Drilled xxx.xxm in xx.xhrs
X-X-XX-X.X.X-XX-XX

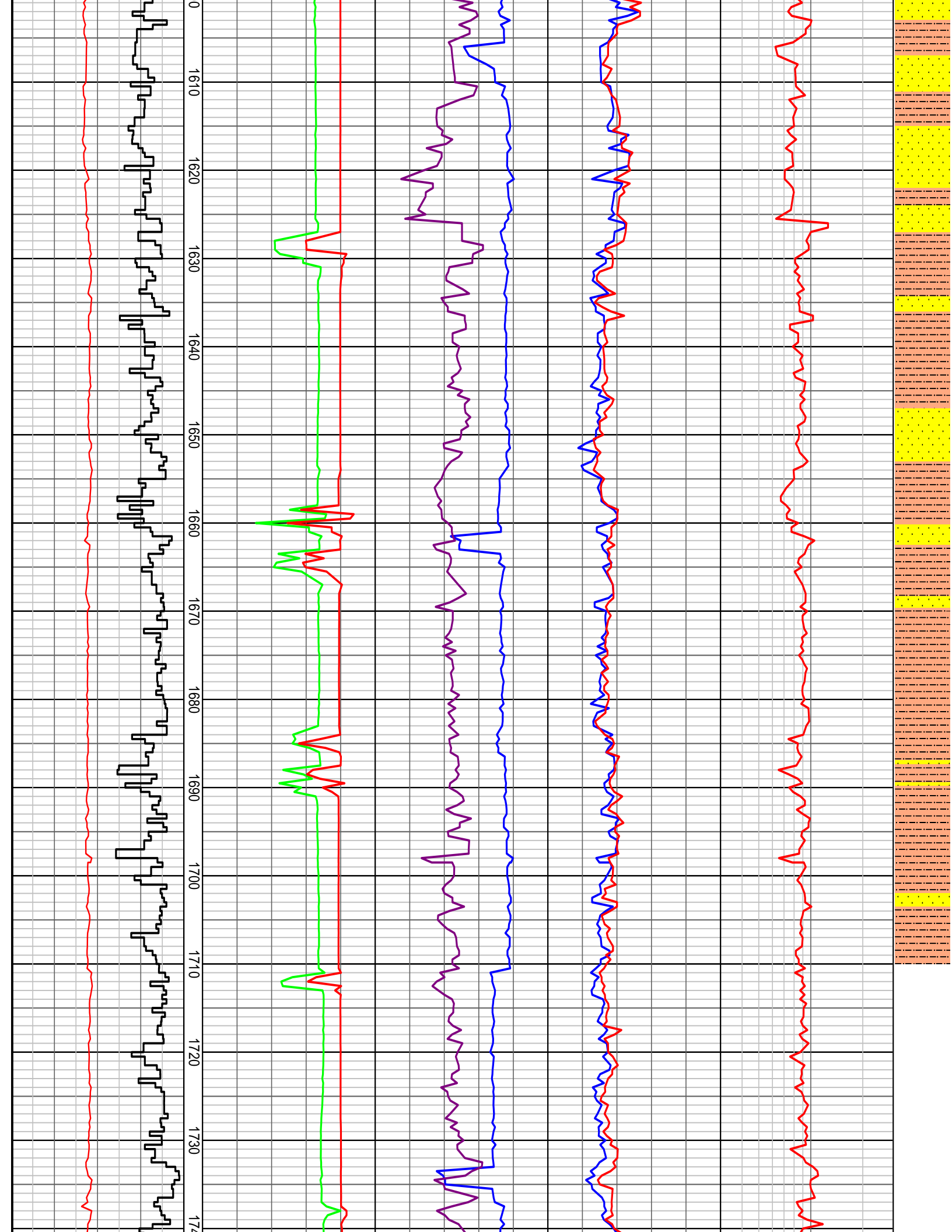
1050
1060
1070
1080
1090
1100
1110
1120
1130
1140
1150
1160
1170
1180

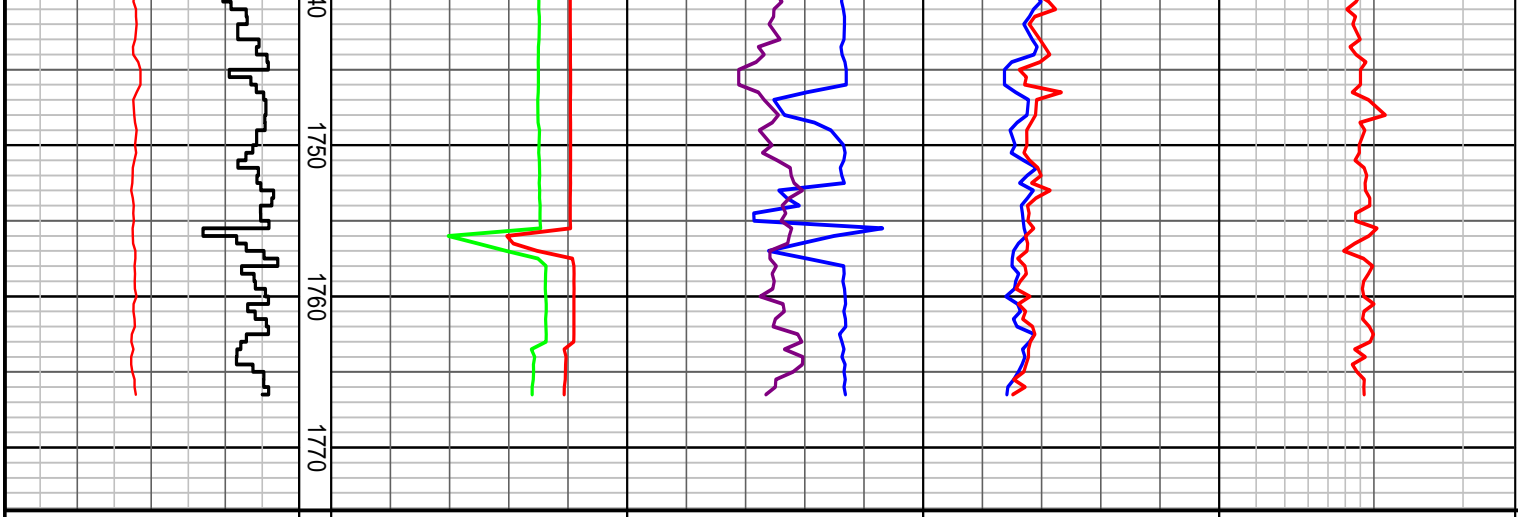












HENRY 2DW1 ST1 DRILLING DATA PLOT

Hookload	Standpipe Pressure	Bit RPM	Torque Avg	DXC	INTERPRETED LITHOLOGY
100 200 300 400 klbf	1000 2000 3000 4000 5000 psi	50 100 150 200 250 RPM	5 10 15 20 25 kft.lb	unitless	
Rate of Penetration	Flow In	Weight On Bit	Torque Max		
200 150 100 50 m/hr	240 480 720 960 1200 USg/min	10 20 30 40 50 klbf	5 10 15 20 25 kft.lb		

MD meters 1:500